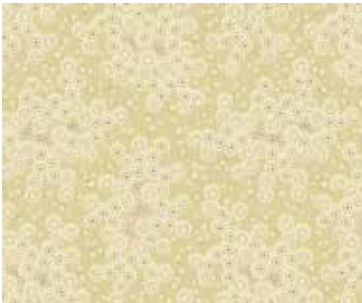


Clotted Creams and Caramels



BY DI-FORD HALL

Clotted Creams and Caramels Quilt designed by: **Di Ford-Hall**
Quilt Size: **72" x 72"**
andoverfabrics.com



andover



makower uk
The Henley Studio

Free Pattern Download Available

1384 Broadway New York, NY 10018
Tel. (800) 223-5678 • andoverfabrics.com

Clotted Creams and Caramels Quilt

Introducing Andover Fabrics new collection: Clotted Creams and Caramels by Di Ford-Hall

Quilt designed by Di Ford-Hall



Quilt finishes 72" x 72"

56 Blocks: 6" x 6"

1 Block: 18" x 18"

A multitude of scrappy small stars surrounds the large central star in this square quilt-the perfect size for a queen topper or dramatic wall quilt. The soft cream prints lend an antique feel to the traditional star blocks. An easy pieced border frames the stars beautifully.

Cutting Directions

Note: Read assembly directions before cutting patches. All measurements are cut sizes and include 1/4" seam allowances. A fat 1/4 is an 18" x 20"-22" cut. WOF designates the width of fabric from selvedge to selvedge (approximately 42" wide).

For (1) 6" block:

Light print Cut (1) square 3 1/2" x 3 1/2"
Cut (8) squares 2" x 2"

Dark print Cut (4) rectangles 2" x 3 1/2"
Cut (4) squares 2" x 2"

Fabric A Cut (56) squares 6 1/2" (setting)
Cut (1) square 3 1/2" x 3 1/2" (center star)
Cut (8) squares 2" x 2" (center star)
Cut (3) squares 4" x 4" (border HST)

Fabric B Cut (8) squares 3 1/2" x 3 1/2" (big flying geese)
Cut (1) strip 2" x 18" (four-patches)
Cut (3) squares 4" x 4" (border HST)
Cut light patches for 4 blocks

Fabric C Cut (1) strip 2" x 18" (four-patches)
Cut (3) squares 4" x 4" (border HST)
Cut light patches for 4 blocks

Fabric D Cut (4) rectangles 3 1/2" x 6 1/2" (big flying geese)
Cut (3) squares 4" x 4" (border HST)
Cut light patches for 4 blocks

Fabric E Cut (4) squares 4" x 4" (big star)
Cut (3) squares 4" x 4" (border HST)
Cut light patches for 4 blocks

Fabric F Cut (8) squares 3 1/2" x 3 1/2" (big flying geese)
Cut (4) rectangles 2" x 3 1/2" (center star)
Cut (4) squares 2" x 2" (center star)
Cut (3) squares 4" x 4" (border HST)
Cut dark patches for 4 blocks

Fabric Requirements

		Yardage	Fabric
Fabric A	blocks	2 1/2 yards	8606-L
Fabric B	blocks	1/2 yard	8608-LN
Fabric C	blocks	fat 1/4 yard	8610-L
Fabric D	blocks	1/2 yard	8642-L
Fabric E	border	1/2 yard	8643-L
Fabric F	blocks	1/2 yard	8146-R
Fabric G	blocks	fat 1/4 yard	8151-K
Fabric H	blocks	1/2 yard	8628-R
Fabric I	blocks, binding	1 yard	8633-N
8 Lights	blocks	fat 1/4 yard each	
	8607-L	8609-L	8610-LN 8611-LN
	*8611-LR	8612-LR	8613-L 8613-LN
8 Darks	blocks	fat 1/4 yard each	
	8147-K	8149-K	8152-R 8154-R
	8155-P	8157-N	8631-N 8632-R
*Backing		3/4 yards	8611-LR

Fabric G Cut (3) squares 4" x 4" (border HST)

Fabric H Cut (4) rectangles 3 1/2" x 6 1/2" (big flying geese)
Cut (4) squares 3 1/2" x 3 1/2" (big star)
Cut (4) squares 4" x 4" (big star)
Cut (3) squares 4" x 4" (border HST)
Cut dark patches for 4 blocks

Fabric I Cut (8) strips 2 1/2" x WOF for binding
Cut (3) squares 4" x 4" (border HST)
Cut dark patches for 4 blocks

8 Lights From each:
Cut (3-4) squares 4" x 4" (29 total for border HST)
Cut light patches for 5 blocks

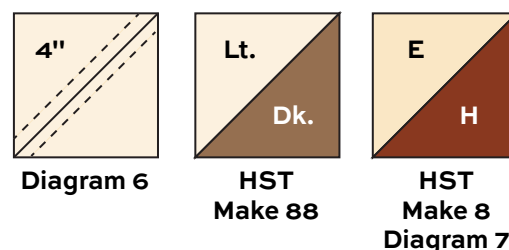
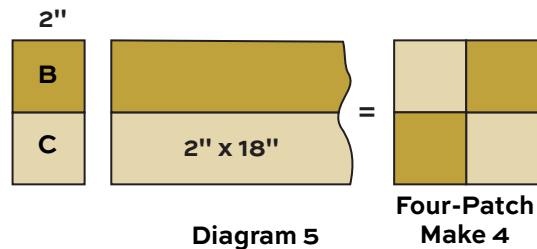
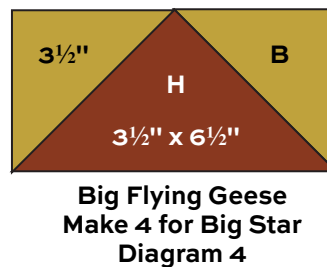
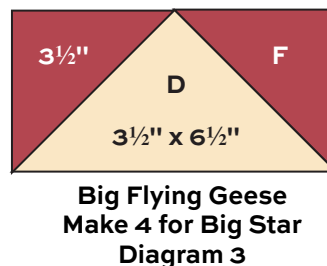
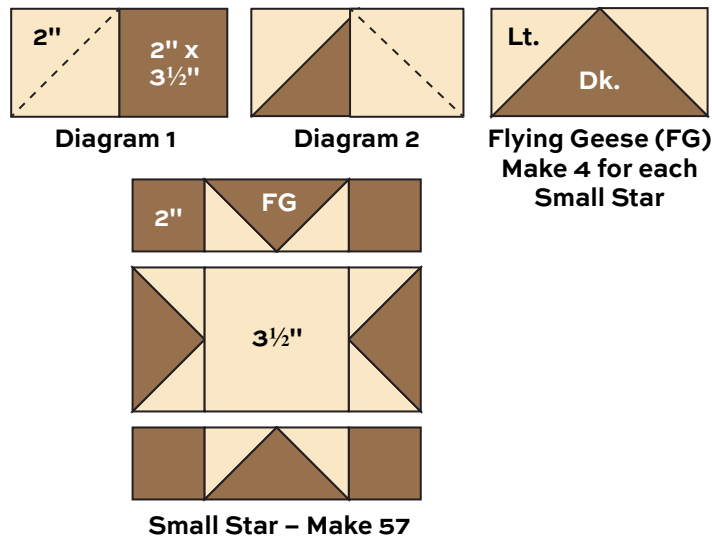
8 Darks From each:
Cut dark patches for 5-6 blocks (44 blocks total)
Cut (4) squares 4" x 4" (border HST)
From 4 fabrics:
Cut (1) square 3 1/2" x 3 1/2" for border corners

Backing Cut (2) panels 40" x 80", pieced to fit quilt top with overlap on all sides

Clotted Creams and Caramels Quilt

Making the Quilt

- Choose one light and one dark print for each star. Cut the patches needed as listed in the Cutting Directions. The small and big star blocks are made with quick piecing methods. To make the flying geese units for the small star, draw a diagonal line on the wrong side of each light 2" square. Place a marked square on one end of a dark 2" x 3 1/2" rectangle, right sides together. Sew on the marked line; trim away and discard excess fabric (Diagram 1). Press open. Repeat this process on the opposite end of the rectangle to make a flying geese (Diagram 2). Make 4 alike for each small star.
- Referring to the small star diagram, arrange 4 flying geese, 4 matching dark 2" squares, and a matching 3 1/2" light square to make a small star block. Make a total of 56 blocks. Make a small star for the center block using Fabric A and Fabric F patches. Set blocks aside.
- Referring to Step 1 and Diagram 3, make 4 flying geese using Fabric F 3 1/2" squares and Fabric D 3 1/2" x 6 1/2" rectangles for the big star block. Make 4 more flying geese using Fabric B squares and Fabric H rectangles (Diagram 4). Set aside.
- To make the four-patches for the big star block, join Fabric B and Fabric C 2" x 18" strips. Press seam allowance to one side. Cut 8 segments 2" wide from the band. Join 2 segments together as shown to make a four-patch (Diagram 5). Make 4 like this.
- The big star block and pieced border use half-square triangles (HST) that finish 3" square. Use your favorite method to make HST, or follow these directions. Draw a diagonal line on the wrong side of each light 4" square (Diagram 6). Place a marked square on a dark square, right sides together. Sew 1/4" seam on each side of the marked line; cut apart on the marked line (Diagram 6). Press open to make pieced HST. Trim the square to 3 1/2". Make 88 total HST for the border. Make 8 HST for the big star using Fabric E and Fabric H squares (Diagram 7).

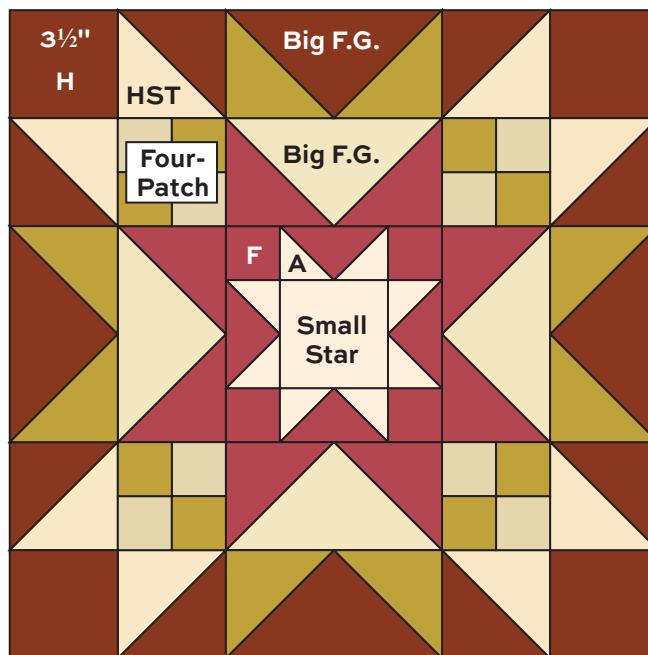


Clotted Creams and Caramels Quilt

- Refer to the big star diagram. For the top row, join a flying geese with Fabrics B and H, 2 HST with Fabrics E and H, and 2 Fabric H $3\frac{1}{2}$ " squares in a row. Be sure to orient the light and dark prints as shown. Join the parts together. Likewise, join 2 HST, 2 four-patches, and a flying geese with Fabrics D and F to make the second row. For the middle row, join 4 flying geese and the small star block with Fabrics A and F. Make rows 4 and 5. Stand back to be sure that fabrics are in the correct position before stitching rows together. Hint: Be sure that all dark red Fabric H patches are on the outside of the block.
- Referring to the Quilt Diagram, alternately join 6 small star blocks and 5 Fabric A $6\frac{1}{2}$ " squares to make a horizontal row. Make 4 rows like this. Join 5 small star blocks with 6 Fabric A squares. Make 4 rows like this. Set aside.
- Join 2 star blocks and 2 Fabric A squares to make a side row. Make 6 rows like this. Join 3 of these rows to make a side unit, turning the rows as shown. Repeat for the other side. Sew side units to the sides of the big star block. Sew the rows from Step 7 in the correct order to the top and bottom.
- To make the pieced border, arrange and join 11 HST made in Step 5 side by side. Join another 11 HST side by side, orienting the light/dark fabrics in mirror image. Sew the 2 halves together, noting how they join where they meet. Sew to a side of the quilt. Repeat for the other side. Likewise, make 2 more pieced borders. Sew a dark $3\frac{1}{2}$ " square to each end. Sew to the top and bottom of the quilt.

Finishing the Quilt

- Layer the quilt with batting and backing and baste. Quilt in the ditch around block patches. Bind to finish the quilt.



Big Star

Clotted Creams and Caramels Quilt



Quilt Diagram



Clotted Creams and Caramels

BY DI FORD-HALL



8606-L



8607-L



8608-LN



8609-L



8610-L



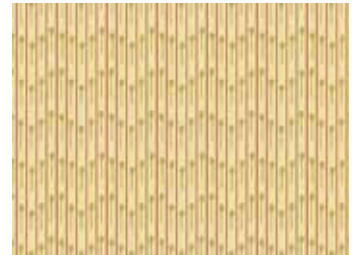
8610-LN



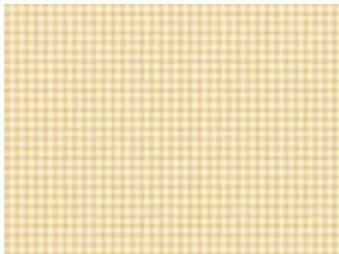
8611-LN



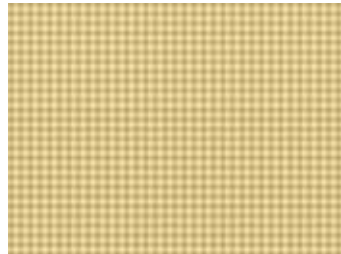
8611-LR



8612-LR



8613-L



8613-LN



8642-L



8643-L

Blend with fabrics from **TRINKETS** by Kathy Hall



8146-R



8147-K



8149-K



8151-K



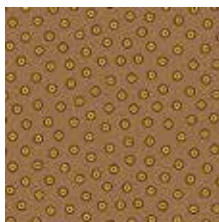
8152-R



8154-R



8155-P



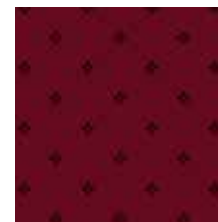
8157-N



8628-R



8631-N



8632-R



8633-N

All fabrics are used in quilt pattern. Fabrics shown are 50% of actual size.

andover



makower uk
The Henley Studio

Free Pattern Download Available

1384 Broadway New York, NY 10018
Tel. (800) 223-5678 • andoverfabrics.com